

Find the best products now

AN Library

[ARCHITECTURE](#) [ART](#) [DESIGN](#) [URBANISM](#) | [AN INTERIOR](#) [AWARDS](#) [CONFERENCES](#) [SUBSCRIBE](#)

Let in the light

The Harvard Business School's Schwartz Pavilion opens with steel canopies and operable doors

By [Matt Hickman](#) • July 17, 2020 • [East, Facades+](#)SHARE    

Tucked beneath a stately London planetree in [Harvard Business School's](#) new quadrangle in the Allston area of Boston is a 4,168-square-foot contemporary structure that brings a laid-back, informal sensibility to the famously buttoned-up, [McKim, Mead & White](#)-designed campus.

BROUGHT TO YOU BY:

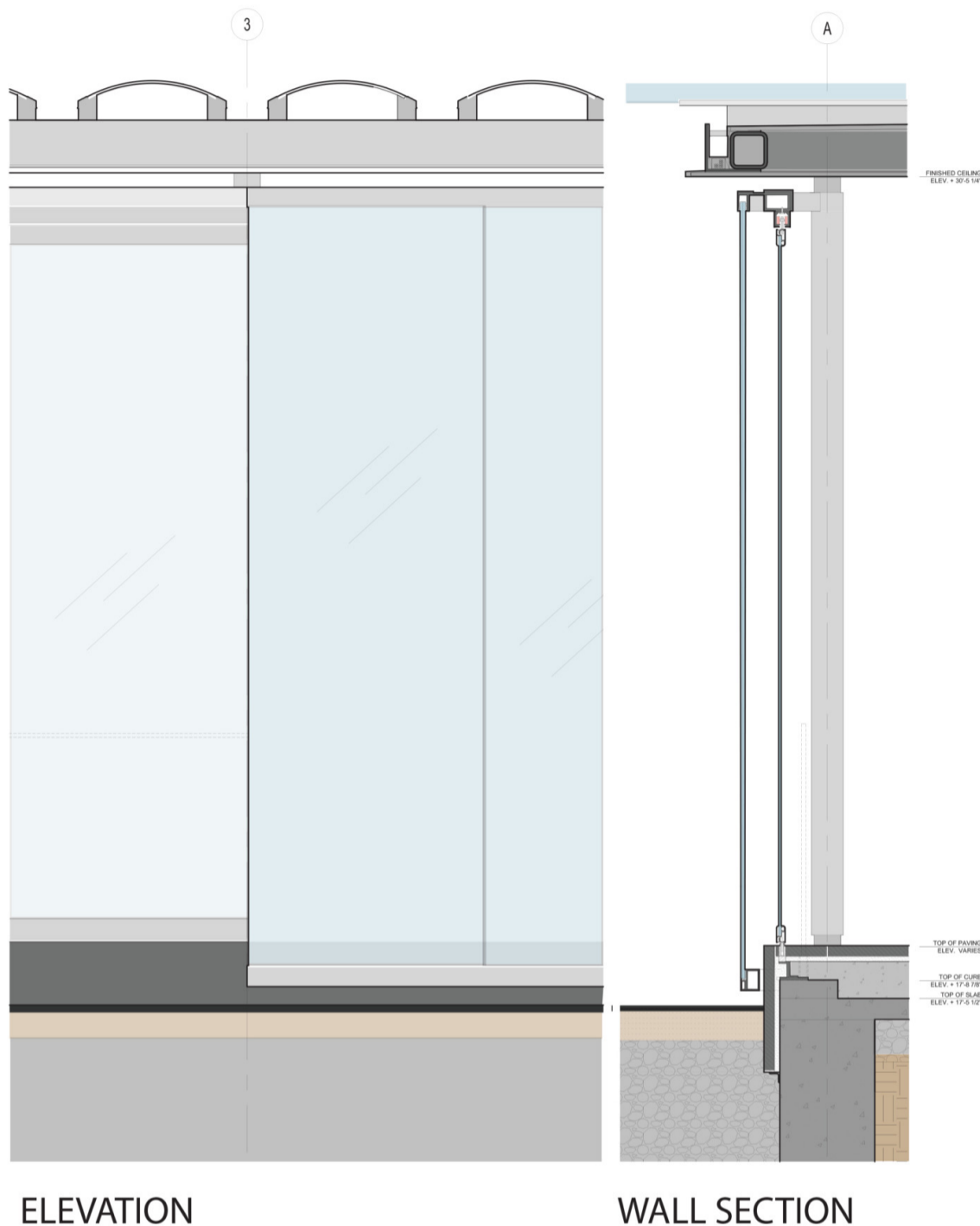


Outfitted with a gas-powered fire feature, a bar, and Adirondack chairs aplenty, the Schwartz Pavilion functions as a breakout space for large events held at the neighboring 1,000-seat Klarman Hall, completed in 2018. More regularly, it provides an inviting alternative to the typical venues (e.g., drab, confining conference rooms) where student groups might meet.

Featuring a sheltered terrace and a glass-enclosed space framed by

The Harvard Business School's Schwartz Pavilion opens with steel canopies and operable doors

light, air circulation, and the ability to spread out are urgent considerations.



ELEVATION

WALL SECTION

A detailed elevation and section of the pavilion's oversize and operable glass doors. (Courtesy Reid Architecture)

Efforts to maintain comfortable distances and bring the outdoors in are made easier with metal and laminated-glass operable doors, including frameless, top-hung sliding panels on the south side and at the northeast corner and folding/sliding doors on the west side. Fabricated by SUNFLEX Wall Systems, the lightweight deployable doors can be easily refigured, depending on privacy needs, event size, and weather conditions. (The structure relies on passive heating and cooling and is sited to account for that.)

During initial meetings with the school's campus architects, "our pitch was that it's not a building, but more of a landscaped space," explained

- Facade Manufacturer
Josef Gartner
Permasteelisa
Group
Cricursa
Sevasa
SUNFLEX Wall
Systems
- Architect
REID architecture
- Designer
Collaborator
James Carpenter
Design Associates
- Structural Engineer
schlach
bergemann partner
- General Contractor
Consigli
Construction
- Location
Boston
- Date of
Completion



Trending Now

- 1 [Eva Franch i Gilabert fired as director of London's Architectural Association](#)
- 2 [Getty Foundation announces final round of Keeping It Modern conservation grants](#)
- 3 [Seven architects reveal their pandemic reads](#)
- 4 [World's first underwater hotel opens in the Maldives](#)
- 5 [Akon finalizes deal to build a cryptocurrency city in Senegal](#)
- 6 [After withdrawing from its Baltimore project, West 8 tells its side of the story](#)
- 7 [St. Pete Pier activates the waterfront and beyond in Florida](#)

The Harvard Business School's Schwartz Pavilion opens with steel canopies and operable doors

Completed over two phases, with the final phase wrapping up in the spring of 2019, the pavilion was a close collaboration between [REID Architecture](#), Cambridge, Massachusetts-based landscape architecture practice [Reed Hilderbrand](#), and cross-disciplinary New York City-based design firm [James Carpenter Design Associates](#).

The design also took student preferences into account: Freeman noted that students strongly requested a distinct character for the pavilion during working sessions. "They're always looking for opportunities to meet and hang out but not necessarily go off and make a commitment," Freeman said. "They really wanted a kind of backyard hangout space, just a place to informally socialize. And this informal aspect was just as important as programmed and planned events organized by the school."



Get a Bid from an A View Our Project Pl

Ad Save money on you our construction proces buildzoom.com

Learn more

Boston

Harvard

James Carpenter

McKim Mead & White

- Products
 - Custom CRICURSA laminated glass
 - Custom
 - Permasteelisa
 - Group Gartner steel frame



original artwork
raynewyork.com

Hiring is tough.

That's why we're relaunching the A'N Job Board Connecting AEC Firms with job seekers.
[Learn More](#)

Trading Notes

Leaders. Thinkers. Solvers.

Livestreaming every Friday at 1PM ET.

Popular Posts

- 1 [Akon finalizes deal to build a cryptocurrency city in Senegal](#)
- 2 [West 8 withdraws from Baltimore waterfront overhaul after blackface photo resurfaces](#)
- 3 [The future doesn't look so bright for New Jersey's American Dream](#)
- 4 [World's first underwater hotel opens in the Maldives](#)
- 5 [Yale architecture students win HUD affordable housing competition](#)
- 6 [When are museums in the U.S. reopening?](#)
- 7 [Architectural Association rocked after Eva Franch i Gilabert receives vote of no confidence](#)

AN DIGITAL EDITION

Sponsored By

GOLDBRECHT

INNOVATIVE
FENESTRATION
SOLUTIONS